



॥वसुधैव कुटुम्बकम्॥

# SYMBIOSIS SCHOOL OF ECONOMICS

*... Creating Equilibrium*

PLACEMENT BROCHURE  
2015-17



# Contents

---

From the Director's Desk	03
Symbiosis School of Economics	04
M.Sc. Economics Program	06
Specializations	08
Student Profiles	09
M.Sc. Economics Development Studies	25
Student Profiles	26
Why Recruit Us?	33
Guest Lectures & Symposiums	35
Faculty	38
Past Recruiters	40
Internships	41
Other Companies our Students have Interned	42

---

# From the Director's Desk

Dear Recruiters,

It gives me immense pleasure to introduce to you the graduating M.Sc. Economics class of 2017! While we have commenced our journey with a Masters programme in 2011, we at SSE are confident that we have left the Symbiosis stamp of quality education on our students. This is an outcome of the efforts of our dynamic, committed and experienced faculty members who are the backbone of our institute. We strive to ensure that the environment at SSE remains committed to academic excellence and intellectual freedom.

We provide our students with an education that empowers them with knowledge, familiarizes them with analytical skills and encourages them to be adaptable and result oriented. The course requires discipline and is demanding, but gives plenty of scope for creativity, originality and student initiatives. The students are sensitized to different cultures as they are drawn from various parts of India and the world.

We believe that the graduates from SSE will be pragmatic professionals, competent decision and policy makers while also being sensitive human beings. They will be capable of providing an integrated framework to various economic issues, and all other concerns needed to be addressed at the micro, macro and global levels.

It is my privilege to invite you for placements at Symbiosis School of Economics, Pune. We look forward to a mutually beneficial, and a long-term collaborative relationship.

Warm Regards,

**Dr. Jyoti Chandiramani**

Director, Symbiosis School of Economics





# Symbiosis School of Economics

... *Creating Equilibrium*

## About SSE

Established in 2008, Symbiosis School of Economics is a young, vibrant and rapidly growing institution, with a demonstrable record of success. SSE is a niche institute seeking to develop intellectual discipline, critical and analytical assessment which will result in rational thinking along with an understanding of the need for constrained optimization and a strong urge to strive towards achieving equilibrium. We at SSE, achieve these goals in an educational environment committed to excellence and academic freedom.

Higher education is critical to successful economic development and quality of life. SSE offers graduate and postgraduate programs in Economics within which students develop the intellectual and professional competencies for successful life and work leadership. The course content is rigorous and the approach is descriptive as well as investigative; it connects the students with every aspect of economic life through various facets – the micro, the macro and the global setups. It is our endeavour to create a class of students who will be capable of including innovations and pragmatism into problem solving in these very spheres. With its interdisciplinary flavour, the curricula prepare students for careers in banks, financial institutions, media and communication, Government, academia and so on. Despite the demanding environment, there is ample scope for creativity, originality and student Initiatives. It is a journey of academic pursuits, which will be ever evolving including different perspectives from varied stakeholders, making our courses increasingly relevant and meaningful.

## Program Highlights

- ◆ Rigorous and ever evolving curriculum
- ◆ Continuous assessment through internal and external assessments - providing opportunity for classroom participation, innovative assessments besides semester end examinations and class tests
- ◆ Co-curricular and extra-curricular activities through eleven active clubs.
- ◆ Suitable infrastructure and facilities: ICT enabled lecture rooms, Library, Wi-Fi enabled campus, a well-equipped Gymnasium, Canteen, Health Care Centre, Auditorium, Hostel Accommodation and ICT Centre.
- ◆ Unique International Collaborations: SSE through the Symbiosis Centre for International Education (SCIE)
- ◆ The Centre for Academic Writing supports students in writing essays, papers and reports of various types. It also publishes an annual journal - *Oeconomica Scriptis* - that is a compilation of outstanding academic writing.

- ◆ The Centre for Quantitative Learning and Applications facilitates advanced level data analysis and statistical software training (SAS, SPSS, STATA, R, Gretl and other statistical and econometric software) for the students.
- ◆ Faculty and students have access to Online Databases like JStor, Indiastat, CMIE, Prowess, Economic and Political Weekly and so on.
- ◆ Faculty through membership of different committees contribute to the growth of the institute.

## Research at SSE

Faculty at SSE are involved in research in various fields. Students are encouraged to assist on research projects to enhance their learning and research experience.

Urban Development – Faculty at SSE have been actively and consciously engaging with researchers, practitioners and academicians over the last few years and developed an informal shared network on various issues, pertaining to the urban agenda. SSE looks forward to starting an Urban Development Centre with the objective to have a focused approach to urban issues, which provides the necessary leverage to implement strategic interventions, test its efficacy and re-orient future responses through outcome measurement/evaluation. The identified focal themes include Governance, Transport, Poverty, Basic Services for Urban Poor (Slums & Housing in Slums) and Urban Finance.

Sustainable Development- Faculty researching in this area are exploring how innovation and technology could play a pivotal role in sustainable development. They are also investigating the implications of linkages between FDI, international trade, innovation and the behavioural pattern of skilful human development.

International Trade – Research in this area covers various aspects of trade including Pure Theory of Trade, Trade Policies, Foreign Capital, Labour Market, Trade and Environment, International Trade Organizations and Regional Cooperation in Trade as well as International Capital Markets.

Behavioural and Experimental Economics – SSE faculty have been working closely with corporate organizations to approach challenges in the HR and Marketing spaces, using Behavioural economics. Studies have been conducted in areas like market entry strategy, rewards and recognition, employer branding and performance measurement. Faculty research in experimental economics is aimed toward examining the how various aspects of identity and institutions influence decision making by conducting experiments and applying relevant econometric analysis.



## M.Sc. Economics Program

The M.Sc. Economics programme is interdisciplinary. The programme seeks to develop intellectual discipline, critical and analytical thinking with a view to groom passionate individuals capable of taking up responsibility. We have a highly rigorous and relevant curriculum, catering to the dynamic nature of global markets. We, at SSE, strive hard to create an enabling framework to facilitate the smooth translation of skills to jobs.

We select the best students from the applicant pool and provide them with a platform where their skills are put to test. To safeguard the efficacy of the program, SSE has a highly comprehensive screening process. This induction criterion serves as a filter to enrol the best candidates across different disciplines with proven excellence not just in academia but also in extracurricular activities. We have an eclectic mix of student backgrounds ranging from economics, commerce, mathematics, statistics, management, and marketing. This diversified student base brings to the table a broad set of ideas, innovations and a broad framework of dynamic iterations. This talented student community, together with the knowledge ethic imbibed at SSE ensures that students are prepared to take on roles as managers, economists, statisticians, analysts and entrepreneurs.

SSE adopts innovative and proactive methods of pedagogy with emphasis on holistic developments of individuals. The coursework has been designed to acclimatize students to the rigors of a highly competitive workplace. Inherent with the coursework is a system of Continuous Evaluation (CE) that provides critical evaluation of a candidate's performance from time to time. The curricula places a lot of importance on intensive application based research and analysis. Further, to strengthen the skill set, the students undergo workshops where they are trained to handle and implement data packages and software like SPSS, STATA, GRETL, R and SAS.

As part of the course, all students are required to complete a two month Industry Internship. The objective of the internship is to give students the opportunity to experience real world applications of theories they have studied.

At the end of the two years students are well prepared to face the challenges of academia, research, business and industry requirements.



MSc. Economics Batch 2015-17



MSc. Economics Faculty



# Specializations

## M.Sc. Economics International Trade

The specialization in International Trade broadly explores the principles of economics related to the causes and effects of trade beyond geographical and political boundaries. This, in turn, explains the patterns and consequences of transactions and interactions between the inhabitants of different countries, including trade, investment and migration and other factors. Parts of the specialization also involve investigating the consequences of trade activities on economies in perspectives of resources, preferences and institutions. This specialization module highlights the angles of politico-economic policy variables on world economies, as well, particularly in the post-globalized era.

### Course Structure

Course Titles	Credits
Advance Microeconomics - I	4
Advance Microeconomics - II	4
Advance Macroeconomics - I	4
Advance Macroeconomics - II	4
Mathematical Economics	4
Advance Econometrics - I	4
Advance Econometrics - II	4
Economic Growth Theory	4
Public Economics	4
Research Methodology & Packages	6
Pure Theory of Trade	4
International Trade Policy	4
Foreign Capital, Labour Market and Development	4
Trade and Environment	4
Industry Internship	7
Multinational Trade Procedures and Laws	4
International Organizations and Regional Co-operation in Trade	4
International Capital Market and Finance	4



# Student Profiles

## International Trade

**ADHIRAJ BANDHU GUHA**  
adhiraj.guha.2015@sse.ac.in

**Background:** St. Xavier's College, University of Calcutta  
**Summer Internship:** Research and Information Systems (RIS) New Delhi.  
**Other Internships:** Internship at 2Coms consultancy  
**Research Areas:** Sector and country-wise study of FDI outflows and inflows



**ALISHA BISHOI**  
alisha.bishoi.2015@sse.ac.in

**Background:** B.J.B. Autonomous College (Utkal University)  
**Summer Internship:** Future Generali Life Insurance  
**Other Internships:** ASRA, SBI  
**Research Areas:** SAMPARK-connect to win (Analysis on business generation of advisors)





## Student Profiles

---



### **ANKITA ROY**

ankita.roy.2015@sse.ac.in

**Background:** Scottish Church College, University of Calcutta

**Summer Internship:** Forbes Marshall

**Research Areas:** Trend Analysis of Actual users business & Strategies recommendation



### **AROHI GUPTA**

arohi.gupta.2015@sse.ac.in

**Background:** Shaheed Bhagat Singh College, Delhi University

**Summer Internship:** Public Affairs Centre, Bangalore

**Other Internships:** Internship at PMI (NGO)

**Research Areas:** Water Pricing

## Student Profiles

---

### AYUSHI KAR

ayushi.kar.2015@sse.ac.in

**Background:** Scottish Church College , University of Calcutta  
**Summer Internship:** Ideation Technologies  
**Research Areas:** Statistical Analysis of insurance data , Sentiment Analysis using R and SAS



### CHANDRIMA SAHA

chandrima.saha.2015@sse.ac.in

**Background:** Gokhale Memorial Girls' College, University of Calcutta  
**Summer Internship:** iKure Techsoft Pvt. Ltd  
**Research Areas:** Impact assessment and data analysis on rural healthcare





## Student Profiles



### DEEPALI SHARMA

deepali.sharma.2015@sse.ac.in

- Background:** Amity School of Economics, Amity University, Noida
- Summer Internship:** Ministry of Finance, GST Policy Wing
- Other Internships:** The Economic Times, U.P. Statistics and Economics Dept., NSSO, Santushti Securities Pvt. Ltd.
- Research Areas:** An analysis of the policy implications of GST on the e-commerce sector



### GAURI KAILASHNATH SHARMA

gauri.sharma.2015@sse.ac.in

- Background:** Mulund College of Commerce, University of Mumbai
- Summer Internship:** InGovern
- Other Internships:** IndiaNotes, PAL, PetVets
- Research Areas:** Analysis of Board structure and top management in Listed Companies; Policy analysis in relation to corporate governance

## Student Profiles

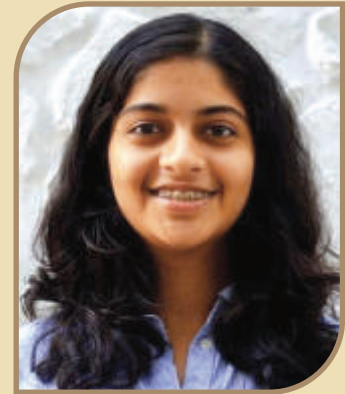
---

**IRA VIKRANT VAISHAMPAYAN**  
ira.vaishampayan.2015@sse.ac.in

**Background:** Brihan Maharashtra College of Commerce,  
Savitribai Phule Pune University, Pune

**Summer Internship:** HDFC Bank Ltd.

**Research Areas:** Scoping out Offshore Business Units as Potential  
Clients



**JUSTINA JOSE**  
justina.jose.2015@sse.ac.in

**Background:** Stella Maris College, University of Madras

**Summer Internship:** National Institute of Urban Affairs

**Other Internships:** All India Institute of Local Self Government

**Research Areas:** Analysis of the Housing for All, Program 2022; Role  
of Privatisation or PPP's in the Provision of Basic  
Services





## Student Profiles

---



### **KATYAYNI CHATURVEDI**

katyayni.chaturvedi.2015@sse.ac.in

**Background:** Kalindi College, University of Delhi

**Summer Internship:** National Institute of Urban Affairs

**Research Areas:** Analysing accessibility of housing and basic amenities to migrants and non-migrants in an urban village of Delhi (under SHRAMIC)



### **KETAKI SANJAY GORHE**

ketaki.gorhe.2015@sse.ac.in

**Background:** Fergusson College, Savitribai Phule Pune University

**Summer Internship:** Mhalgi Kulkarni Associates

**Research Areas:** Scope, Impact analysis and Financial viability for a developmental project in Chakan

## Student Profiles

---

### KRISHNA NAMBAKKAT

krishna.nambakkat.2015@sse.ac.in

- Background:** Sophia College for Women, University of Mumbai
- Summer Internship:** Jawaharlal Nehru University
- Other Internships:** Internships at Seva Mandir, Talent Metrix
- Research Areas:** Gravity Models; RTAs



### MANSI SINGH

mansi.singh.2015@sse.ac.in

- Background:** Amity School of Economics, Amity University
- Summer Internship:** National Institute of Urban Affairs
- Other Internships:** World Food Programme by UN
- Research Areas:** Comparison of Municipal Budgets





## Student Profiles

---



### **MONIKA JAHNAVI MYLAVARAPU**

monika.mylavarapu.2015@sse.ac.in

**Background:** S.P. College, Savitribai Phule Pune University

**Summer Internship:** Confederation of Indian Industry

**Research Areas:** WTO's Trade Facilitation Agreement with focus on issues of Single Window System and Paperless Trade by Benchmarking Global Best Practices.



### **NEHA SAHA**

neha.saha.2015@sse.ac.in

**Background:** Lady Brabourne College, University of Calcutta

**Summer Internship:** National Institute of Urban Affairs

**Other Internships:** Indian Institute of Foreign Trade, Prospect Academy

**Research Areas:** AMRUT-Analysis of the Project financing of Amrut cities for FY 2015-16



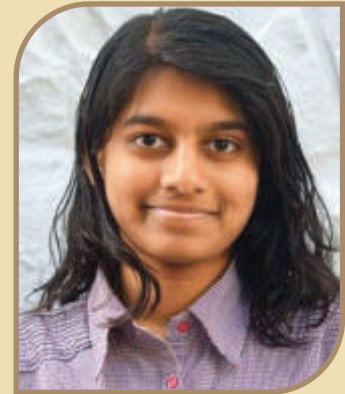
## Student Profiles

---

### PARUL MAHAWAR

parul.mahawar.2015@sse.ac.in

- Background:** Symbiosis School of Economics, Symbiosis International University
- Summer Internship:** Symbiosis School of Economics
- Other Internships:** NTPC, SIU
- Research Areas:** Consumer behaviour towards luxury goods: An experimental approach



### PUTHUR POOJA VENUGOPAL

pooja.venugopal.2015@sse.ac.in

- Background:** Womens Christian College, University of Madras
- Summer Internship:** InGovern
- Other Internships:** ICC CARGO LLC
- Research Areas:** Analysis of Board structure and top management in Listed Companies & Policy analysis in relation to corporate governance





## Student Profiles

---



### **PRATIK SHASHIKANT GOLE**

pratik.gole.2015@sse.ac.in

**Background:** K.J. Somaiya College of Arts and Commerce, University of Mumbai

**Summer Internship:** Tata Capital Financial Services Ltd.

**Research Areas:** Credit analysis to increase disbursal percentages, Geo-profiling Risk heat maps pilot project



### **PRITHA CHATTERJEE**

pritha.chatterjee.2015@sse.ac.in

**Background:** Loreto College, University of Calcutta

**Summer Internship:** National Insurance Company

**Research Areas:** Profitability and Growth Analysis of product and underwriting portfolios

## Student Profiles

---

**RAASHI KEDARNATH**  
raashi.kedarnath.2015@sse.ac.in

**Background:** Ramjas College, Delhi University  
**Summer Internship:** L&T Valves  
**Research Areas:** Analysis of Inventory Risk Management Framework



**RAJOL VIJAY TAVADE**  
rajol.tavade.2015@sse.ac.in

**Background:** Smt.CHM College, University of Mumbai  
**Summer Internship:** Retailers Association of India  
**Other Internships:** Maharashtra Tourism Development Corporation  
**Research Areas:** Food Security and Management system for Retailers.





## Student Profiles

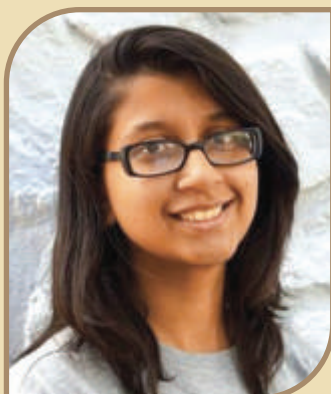
---



### **SANGYA BACHHAWAT**

sangya.bachhawat.2015@sse.ac.in

**Background:** Loreto College, University of Calcutta  
**Summer Internship:** United Bank of India  
**Other Internships:** Prospect Academy  
**Research Areas:** Integrated Treasury and Risk Management



### **SASWATI BANERJEE**

saswati.banerjee.2015@sse.ac.in

**Background:** St.Xavier's College, University of Calcutta  
**Summer Internship:** Hilton  
**Research Areas:** Business Development and Revenue Management

## Student Profiles

---

### SHALINI THAKUR

shalini.thakur.2015@sse.ac.in

- Background:** Lady Brabourne College, University of Calcutta
- Summer Internship:** Emami Agrotech Ltd.
- Research Areas:** Feasibility of production and market potential of rice bran oil in Krishnapatnam, AP and mustard oil in Jaipur, Rajasthan.



### SHATABDO PAL

shatabdo.pal.2015@sse.ac.in

- Background:** Ashutosh College, University of Calcutta
- Summer Internship:** Goodricke Group India Ltd.
- Other Internships:** Cushman And Wakefield
- Research Areas:** Analysis of Tea market and tea exports



## Student Profiles

---



### **SHUBHANGI MADAN**

shubhangi.madan.2015@sse.ac.in

**Background:** Sri Guru Gobind Singh College of Commerce,  
University of Delhi

**Summer Internship:** Symbiosis School of Economics

**Other Internships:** Sharing achievements and Rejuvenating society;  
Invictus Productions

**Research Areas:** Direct selling industry



### **SNEHA ROY**

sneha.roy.2015@sse.ac.in

**Background:** Symbiosis School of Economics, Symbiosis  
International University

**Summer Internship:** Taj Bengal

**Other Internships:** The Linde Group

**Research Areas:** Receiving and Stores for F&B

## Student Profiles

---

### SPARSH CHHABRA

sparsh.chhabra.2015@sse.ac.in

**Background:** SGTB Khalsa North Campus, Delhi University  
**Summer Internship:** KPMG India  
**Other Internships:** Social Spender Pvt. Ltd., HCRA  
**Research Areas:** Risk analysis, Designing SOPs and RCMs



### SUKANYA BHATTACHARYYA

sukanya.bhattacharyya.2015@sse.ac.in

**Background:** Ashutosh College, University of Calcutta  
**Summer Internship:** IndiaSpend  
**Other Internships:** Ikure Techsoft Pvt. Ltd.  
**Research Areas:** Modern Slavery, Edible Oil Import and export, Affordable housing schemes





## Student Profiles

---



### **SUMIT CHETAN GILLITWALA**

sumit.gillitwala.2015@sse.ac.in

**Background:** Ghanshyamdas Saraf College, University of Mumbai

**Summer Internship:** Taurus Capital Advisors

**Other Internships:** AIESEC in Mumbai; Rainbridge Ventures; PNB MetLife India Insurance Co Ltd.

**Research Areas:** Private Equity Investments in Startups



### **YETIRAJ SUKHDEO PINGALE**

yetiraj.pingale.2015@sse.ac.in

**Background:** Smt.M.M.K College, University of Mumbai

**Summer Internship:** National Institute of Urban Affairs

**Research Areas:** Impact of different indicators on the Indian economy



# M.Sc. Economics Development Studies

Development Studies include the broad areas of economics that explore the causes, needs and processes of development in low-income countries. It also involves the study of the structural change phenomena caused by the advancements that these economies witness in the course of their growth process. The specialization focuses on theories and methods, both spatial and temporal, which help in forming policies at the domestic and international levels to achieve optimal social ends. The module also concentrates on certain aspects and issues of economic development across post-war periods, spanning right up to the liberalized and globalized new world economies. It is geared towards a multidisciplinary approach that encompasses social and political angles, other than pure economic concerns.

## Course Structure

Course Titles	Credits
Advance Microeconomics - I	4
Advance Microeconomics - II	4
Advance Macroeconomics - I	4
Advance Macroeconomics - II	4
Mathematical Economics	4
Advance Econometrics - I	4
Advance Econometrics - II	4
Economic Growth Theory	4
Public Economics	4
Research Methodology & Packages	6
Theories, Models of Development and Distribution	4
Market & Institutional Framework of Development	4
Trade, Aid and Development	4
Urban Economic Development	4
Industry Internship	7
Development Experience	4
Rural Development	4
Human Development	4



संस्कृतं कुतश्चिदपि

## Student Profiles

### Development Studies



#### **BHASKAR PRASAD**

bhaskar.prasad.2015@sse.ac.in

**Background:** Symbiosis Institute of Computer Studies and Research, Symbiosis International University

**Summer Internship:** NABARD

**Other Internships:** Inductis India Pvt Ltd.

**Research Areas:** Rural Housing: Issues



#### **DAVID JOSEPH MENEZES**

david.meneze.2015@sse.ac.in

**Background:** K.C.College, University of Mumbai

**Summer Internship:** Rann Neeti Consultants

**Other Internships:** Bethel World Outreach Center, Every Nation, The Club

**Research Areas:** Government and Election Research

## Student Profiles

---

### **GALINA RANA**

galina.rana.2015@sse.ac.in

**Background:** Shivaji College, Delhi University  
**Summer Internship:** Public Affairs Centre (PAC), Bangalore  
**Research Areas:** Rural India



### **KAYATHI SHARATH**

kayathi.sharath.2015@sse.ac.in

**Background:** Christ University  
**Summer Internship:** Investec Capital Services Private Ltd.  
**Other Internships:** Lastaki Advisors Private Limited  
**Research Areas:** Rural Associate (Equities)





## Student Profiles

---



### **MEENAKSHI ADHIKARY**

meenakshi.adhikary.2015@sse.ac.in

- Background:** Gauhati University
- Summer Internship:** Indian Institute of Foreign Trade
- Other Internships:** Cement Manufacturing Co. Ltd.
- Research Areas:** Decline in export and increase in quality of various commodity



### **PAVITRA KRISHNAN**

pavitra.krishnan.2015@sse.ac.in

- Background:** Ram Lal Anand College, Delhi University
- Summer Internship:** National Institute of Urban Affairs
- Other Internships:** Myrefers, Bridge2Tech
- Research Areas:** Collaborative Research and Analysis of Housing, Basic Infrastructure and Service delivery in Urban slums in India

## Student Profiles

---

### **RADHA VIVEKANAND KARMARKAR**

**Background:** Fergusson College, Savitribai Phule Pune University  
**Summer Internship:** Symbiosis School of Economics for PMRDA  
**Research Areas:** Urban economics and Planning



### **RITIKA HEMANT PANDIT** ritika.pandit.2015@sse.ac.in

**Background:** Fergusson College, Savitribai Phule Pune University  
**Summer Internship:** Public Affairs Centre  
**Research Areas:** Research and Data Analysis for a project on women empowerment





## Student Profiles

---



### **SEMSANG DOLMA BOMZON**

semsang.bomzon.2015@sse.ac.in

- Background:** St.Xavier's College, University of Calcutta
- Summer Internship:** Public Affairs Centre
- Other Internships:** Frost & Sullivan, Opus Estates Pvt. Ltd; Don Bosco School; IntSys Pvt. Ltd.
- Research Areas:** Government policies and incentives implemented in elementary schools



### **SHREYA MITTAL**

shreya.mittal.2015@sse.ac.in

- Background:** Shivaji College, Delhi University
- Summer Internship:** IndiaSpend
- Other internships:** Indian Institute of Foreign Trade
- Research Areas:** Modern Slavery, Human Animal Conflict

## Student Profiles

---

### SHROMONA DEY

shromona.dey.2015@sse.ac.in

**Background:** Gokhale Memorial Girls' College, University of Calcutta

**Summer Internship:** Retailers Association of India

**Research Areas:** Policy making in retail industry



### VEERESH TADAHAL

veeresh.tadahal.2015@sse.ac.in

**Background:** J.G College of Commerce, Karnataka University, Dharwad

**Summer Internship:** Institute for Human Development

**Research Areas:** Social Protection Index with reference to South Asian countries





## Student Profiles

---



### **VIDUSHI SANJAY TEWARI**

vidushi.tewari.2015@sse.ac.in

**Background:** Brihan Maharashtra College of Commerce,  
Savitribai Phule Pune University

**Summer Internship:** State Bank of India

**Research Areas:** Small and medium enterprises



## Why Recruit Us?

---

Economics, a social science and highly inter-disciplinary subject still remains one of the most sought after courses by recruiters in both the corporate and research arena. At, SSE we believe that a mere theoretical understanding of the subject will not enable any of the stakeholders- students, professors and the institution as a whole, to grow. Thus our aim is to inculcate the right 'skills' and 'attitude' in the students who will become policy makers in the future. The MSc. Program provides our students opportunities to develop employable skills through the following dimensions of the course:

**Evaluation:** An example of how we ensure that traditional economics and coursework taught can be interpreted by students in the real world scenario is through our rigorous internal evaluation systems. This internal evaluation consists of research papers, assignments, presentations and quiz. Each component carries equal importance in judging student's originality, creativity and most importantly their ability to apply what they have learnt.

**Research:** Research and development is a core component of any modern day industry. Students undergo a rigorous research methodology course that augments their abilities as a researcher. The research papers and assignments along with internships undertaken by the students provides them with a better understanding of the global economic scenario and issues and also make them more capable in performing tasks in an efficacious manner.

**Data Analysis:** The technical skill sets acquired by the students through the course of the programme, which comprises of time series analysis, modeling ,forecasting and the use of various software provides them with the opportunity to handle the strenuous task of analyzing the large pool of economic data.

**Policy Analysis:** The economic indicators governing the market forces of the country are influenced by the decisions taken by policy makers. The Students are equipped with the required knowledge of understanding the market forces and subsequent effects of the policies on the economy.



## Why Recruit Us?

**Economic Journalism:** The various clubs and cultural events of the college provides a platform for the students to the voice their opinions on the economic scenario and issues through debates , group discussions and various new media instruments such as podcasts , presentations and short films . Many of students undertake internships in the field of economic journalism. Thus the students are able to paint an unbiased and informative picture of various economic changes and policy effects that take place worldwide.

**Development Sector:** The institute offers a rigorous and comprehensive course on Development Economics which facilitates a clear understanding of the economics behind the working of the development sector and the various problems faced in that area. The wide work experiences of the faculty from different areas of the development sector further gives a first-hand account of the way things work in these areas, providing a clear and authentic perspective of the work life in the development sector. Given the exhaustive course, an excellent faculty as well as the experiences gained by interning in a diverse range of organisations both in the public and private sectors, students are well prepared for work in the government as well as non- government organisations in the development sector, urban economic development, research institutes and think tanks, corporate social governance and policy making.

We look forward for your support and invite you to be part of the campus placement.

# Guest Lectures & Symposiums



## Seminars & Workshops

Name of the Speaker	Topic
Mrs. Vasundhara Sen, Adjunct Faculty, SCMHRD	Workshop on Smart Cities
Mr Gadgil	Urban Transport Governance
Mr. T P Sing	GIS & Economics
Mr. Prashant Pansare	Big Data & Analytics



## Guest Lectures & Symposiums

### Guest Lectures

Name of the Speaker	Topic
Dr. Indradeep Ghosh - PhD (Economics) MIT	Will Abenomics work in Japan
Ms. Kaehalee Ghorpade	Stress Management
Mr. Kulbhushan Singh - Intelligence Officer, Narcotics Contrl Bureau, Mumbai	Harmful Effects of Drugs
Mr. Arun Nathani - CEO & MD Cybage, Pune	Where do I begin...?
Dr. Urvashi Rathod	Assessing Qualities of Qualitative Research
Mr. Mahesh Zagade, CEO - PMRDA	Regional Development Process
Mr. Pradeep Lokhande, Social Entrepreneur	Rural Development
Dr. Amitabh Kundu, Retired professor, JNU Dr Isher Judge Ahluwalia, Chairperson Board of Governors, ICRIER	A perspective on Development, Inequality and Urbanisation

### Suresh Tendulkar Memorial Lecture Series

Name of the Speaker	Topic	Event
Shri Bibek Debroy, Member of NITI Ayog, Professor at Centre for Policy Research, New Delhi	Twenty Five Years of Reforms: Poverty and Inequality	3 <sup>rd</sup> Suresh Tendulkar Memorial Lecture
Prof. Mahendra Dev, Director and Vice Chancellor, IGIDR, Mumbai	Economic Reforms, Poverty & Inequality	2 <sup>nd</sup> Suresh Tendulkar Memorial Lecture
Dr. Subir V.Gokarn, Director of Research of Brookings Institute, New Delhi and former Deputy Governor of RBI	Strategies of Poverty Alleviation	1 <sup>st</sup> Suresh Tendulkar Memorial Lecture

# Guest Lectures & Symposiums



Regional Consultation at SIU in collaboration with FIDC and RIS



Cultural Activities



## Faculty

Name	Designation	Qualification	Interest Area
Dr. Jyoti Chandiramani	Director	B.A.(Eco),M.A.(Eco),Ph.D	Urban Development, International Trade
Ms. Ishita Ghoshal	Assistant Professor, M.Sc. Program In Charge	B.Sc.(Eco Hons), M.A.(Eco),SET, Ph.D.(Pursuing)	Macroeconomics, International Trade, Applied Econometrics
Mr. Abhinav Pal	Assistant Professor	B.A. (Eco) Hons, M.A. (Eco), NET	MacroEconomics, International Economics and Labour Economics
Ms. Anjali Kulkarni	Assistant Professor	M.Sc., M.Phil. (Statistics) PGDCASA, PhD (Pursuing)	Applied Statistics, Inference, Quantitative techniques, Research Methodology, software development for Statistics
Ms. Devanshi Kulshreshta	Assistant Professor	BA Economics (Hons), MA (Eco), NET	International Trade, Microeconomics, Macroeconomics
Ms. Ishita Ghosh	Assistant Professor	B.A. (Eco), M.A. (Eco), PG Diploma in Foreign Trade, NET, PhD (Pursuing)	International Trade
Ms. Khushbu Thadani	Assistant Professor	B.A. (Eco), M.A. (Eco), NET, Ph.D.(Pursuing)	Development Economics, Health Economics, Industrial Economics, Indian Economy, Microeconomics and issues related to the Urbanization process
Dr. Krishanu Pradhan	Assistant Professor	B.Sc. (Eco), M.A. Eco, M.Phil Eco, NET, Ph.D.	Macroeconomics, Public Finance and Theory of Economic Growth
Mr. Krishnakanta Roy	Assistant Professor, B.Sc. Program In Charge	B.Sc. (Eco), M.A.(Eco), NET, SET	Economic Philosophy, Stock Market, Microeconomics.
Mr. Prasun Bhattamisra	Assistant Professor	B.E. (Mechanical), M.A. (Eco), NET	Applied Econometrics and Quantitative Techniques, Economics of labour, Development economics and Health Economics

# Faculty

Name	Designation	Qualification	Interest Area
Dr. Rachna Shah	Assistant Professor	B.Sc., B.Ed. M.A. (Eco), M.Phil (Eco), M.A. (English), Ph.D.	Rural and Urban Development, Water Management, Environmental Economics, Social Issues and English Literature
Dr. Ranjan Dash	Assistant Professor	B.A. (Eco), M.A. (Eco), M.Phil (Eco), Ph.D. (Eco)	Macroeconomics, International Trade, Applied Econometrics and Development Economics
Dr. Savita Kulkarni	Assistant Professor	B.A. (Eco), M.A. (Eco), Ph.D. (Eco)	Experimental and Behavioral Economics, Development Economics
Mr. Sebin Nidhiri	Assistant Professor	BA Eco, M.Sc. Eco (Development Studies), NET	Behavioural Economics, History of Economic Thought
Dr. Shuchi Misra	Assistant Professor	B.A. (Eco) Hons, M.A. (Eco), Ph.D. (Eco)	Development Economics, Labour and Employment
Ms. Urvashi Dhingra	Assistant Professor	BA, MA (Eco), M.Phil (Eco), PGDBM, NET, Ph.D (Pursuing)	Environmental Economics, Public Economics, Indian Economy
Ms. Ashlesha Khedekar-Swaminathan	Adjunct Faculty	B.Com. (Eco), MBA (Finance), Ph.D. (Eco) (Pursuing)	Behavioral Economics, International Financial Markets, Gender Economics
Ms. Deepika Chawla	Research Assistant	B.A. (Eco Hons), M.A. (Eco), PhD (Eco) (Pursuing)	Development Economics, Applied econometrics, Macroeconomics, International Trade, Mathematical Economics
Mr. Ashish Kulkarni	Visiting	B.A. (Eco), M.A. (Eco), Ph.D. (pursuing)	Trade, Finance
Dr. Meenal Annachatre	Visiting	B.A. (Eco), M.A. (Eco), Ph.D.	Trade, Finance
Mr. Naim Keruwala	Visiting	B. Com., M.A. (Eco)	Development Studies



## Past Recruiters

The students of SSE have been recruited by many prestigious Institutes and Organizations in the past. Some of the prominent organizations which have participated in campus recruitment include

AC Neilson, Bengaluru
Administrative Staff College of India, Hyderabad
Association of Indian Forging Industry, Pune
Basix Academy, New Delhi
Bridge2tech, Pune
Bristlecone India, Pune
Consumer Unity & Trust Society, Jaipur
Deloitte, Hyderabad
Department of Economic Affairs, Ministry of Finance
Financial Technologies, Mumbai
India Development Foundation, Gurgaon
Indian Institute Human Settlements, Bangalore
Indian Institute of Management, Ahmedabad
Institute for Social and Economic Change, Bengaluru
Marketnomix, Pune
Markets and Markets, Pune
MEED International, Mumbai
National Institute of Public Finance and Policy, New Delhi
National Institute of Technology, Rourkela
Public Affairs Centre, Bengaluru
Research and Information System, Ministry of External Affairs, New Delhi
Retailers Association of India, Mumbai
Swayam Shikshan Prayog, Pune
Symbiosis International University, Bengaluru
Symbiosis International University, Pune
TMed Healthcare Pvt. Ltd.
Vodafone Shared Services, Pune
Zephyr Financial Publishers, Mumbai
ZipDial, Bengaluru
ZS Associates, Pune



# Internships

SSE arranges internships for the Masters students. Some of the prominent organizations, where our students had the opportunity to intern, include:

AIFI, Pune	Jindal Steel, Pune
Bharat Forge Ltd., Pune	M.P. State Planning Commission, Bhopal
Bihar State Planning Board, Patna	NABARD, Pune
CII, Mysore	National Institute of Urban Affairs, New Delhi
Collaborative Policy Consultants, Pune	NCDX, Mumbai
Forbes Marshall Foundation, Pune	NIPFP, New Delhi
Foreign Exchange Dealers Association of India	NSE, Mumbai
Giri Institute of Development Studies, Lucknow	PAC, Bengaluru
HDFC Bank Ltd., Mumbai	RBI, Mumbai
IBM, Bengaluru	RBI, Pune
ICICI Lombard, Mumbai	RBS, Mumbai
ICRIER, New Delhi	Retailers Association of India, Mumbai
IGIDR, Mumbai	SCMHRD, Pune
IHD, Gurgaon	SIBM, Bangalore
IHD, Ranchi	Snapdeal
IIHS, Bengaluru	SSE, Pune
Indian Institute of Management, Bengaluru	Tamil Nadu State Planning Commission, Chennai
Indian Statistical Institute, Kolkata	Thermax Social Initiative Foundation, Pune
IndiaSpend, Mumbai	TIDC, Chennai
Janagraaha, Bengaluru	TMed Healthcare Pvt. Ltd.
Janwani, Pune	Xavier Labour Relations Institute, Jamshedpur

## Other Companies our Students have Interned



**CONTACT DETAILS:**

**Faculty-in-Charge:** Ashlesha Swaminathan  
ashlesha.swaminathan@sse.ac.in / placements@sse.ac.in

**Placement Cell (IT):** Adhiraj Guha - adhiraj.guha.2015@sse.ac.in  
Pratik Gole - pratik.gole.2015@sse.ac.in  
Sangya Bachhawat - sangya.bachhawat.2015@sse.ac.in  
Sparsh Chhabra - sparsh.chhabra.2015@sse.ac.in  
Sumit Gilitwala - sumit.gilitwala.2015@sse.ac.in

**Placement Cell (DS):** Pavitra Krishnan - pavitra.krishnan.2015@sse.ac.in  
Semsang D. Bomzon - semsang.bomzon.2015@sse.ac.in

**Address:** Symbiosis School of Economics  
Symbiosis International University  
S.B. Road, Pune 411004, 020 - 020-25675406  
[www.sse.ac.in](http://www.sse.ac.in)

**SSE** Symbiosis School of Economics  
 A Constituent of Symbiosis International University  
 Seneapati Bapat Road, Pune - 411004  
 Tel: 020-25672520, 202-25652444 Email: [admin@sse.ac.in](mailto:admin@sse.ac.in)

TO LEARN ECONOMICS IS TO LEARN PROGRESS  
 TO MASTER ECONOMICS IS TO STEER PROGRESS

To learn economics is to steer progress

**B.Sc. Economics**  
 (3 year full time programme)

**M.Sc. Economics**  
 (2 year full time programme)

Our key differentiators

**SYMBIOSIS**

**SYMBIOSIS INTERNATIONAL UNIVERSITY**  
 (Instituted under Section 3 of the SUG Act, 1984 with Notification No. 19-12/2001, U.S. of the Govt. of India)  
 Accredited by MAAC with 'A' grade

**ECONOMISTS OF TOMORROW ARE MADE HERE.**

- Rigorous curriculum, endorsed by academia and industry
- Innovative pedagogy
- Unique collaborations
- Action oriented research

ADMISSIONS OPEN FOR

M.Sc. Economics	B.Sc. Economics (Hons.)
<p>M.Sc. Registration Closes: 29th May, 2015</p> <p>M.Sc. PI-WAT: 16th &amp; 17th June, 2015</p> <p>Programme Commences: 7th July, 2015</p> <p><a href="mailto:mecadmissions@sse.ac.in">mecadmissions@sse.ac.in</a></p>	<p>It is mandatory to appear for the SET for admission to B.Sc. Economics (Hons.) at SSE.</p> <p>SET Registration Closes: 12th April, 2015</p> <p>B.Sc. Registration Closes: 15th May, 2015</p> <p>Programme Commences: 1st July, 2015</p> <p><a href="mailto:bccadmissions@sse.ac.in">bccadmissions@sse.ac.in</a></p>

For eligibility details & further information please visit [www.sse.ac.in](http://www.sse.ac.in) Prof. Jyoti Chandiramani, Director

Scholarships are awarded to meritorious students joining Symbiosis Institutes by the Symbiosis Society Foundation. For further details, please visit [www.symbiosissocietyfoundation.org](http://www.symbiosissocietyfoundation.org)

**SSE** Symbiosis School of Economics  
 3rd Floor, SCHO Building, Seneapati Bapat Road, Pune - 411004  
 Tel: 020-25672520, 020-25652444 Extension: 249, Fax: 020-25675406

No capitation/donation fee is charged for admission to any programme at any Institute of Symbiosis International University

**ECONOMY** What matters.  
**ECONOMIST** Who matters!

At Symbiosis School of Economics (SSE), we equip students to gain global insights and master the subject to solve today's complex economic challenges.

Admissions open for M.Sc. in Economics (2 year full time)

Specializations: International Trade • Development Studies

Eligibility: Any graduate with exposure to Economics / Mathematics / Statistics / Physics with a minimum of 50% marks (45% for SC / ST) can apply. Students appearing for final year examinations can also apply. Students appearing for final year examinations can also apply but their admissions will be subject to obtaining minimum marks.

Online registrations end on 15th June 2015 • Programme commences on 07th July 2015

Students can also opt for M.Sc. - Ph.D. Integrated programme

Admissions Open for Diploma in Public Policy and Governance (1 year full time)

Eligible: B.A. Honours Graduate / Graduate / Post Graduate in any field / Corporate / NGO / Government Employees

Certificate Courses: Urban Governance | Taxation

Dr. Randa Chakraborty, Deputy Director, International Responsibilities of Office of the Director

**SYMBIOSIS INTERNATIONAL UNIVERSITY**  
 Accredited by MAAC with 'A' Grade

**ECONOMICS**

WE GO BEYOND CONVENTIONAL ECONOMICS while shaping future economists with...

- Accounts
- Environmental Economics
- International Financial Management
- International Relations
- Political Economy of India
- Research Methodology

**B.Sc. (Economics) 3 Years Full-Time Programme**

The programme structure will provide strong foundation in Economic Theory and practice with an emphasis on the application of economic theory to current issues in the Indian and global context.

Step 1: Register online before 12th April 2015  
[www.sse.ac.in](http://www.sse.ac.in) or for SET see scheduled on 09th May 2015

Step 2: ...



# SYMBIOSIS SCHOOL OF ECONOMICS

Symbiosis International University,  
 S.B. Road, Pune 411004.  
[www.sse.ac.in](http://www.sse.ac.in)